

Overload relay 2.2...3.2 A For motor protection Size S00, Class 10  
 Stand-alone installation Main circuit: screw terminal Auxiliary circuit:  
 screw terminal Manual-Automatic-Reset !!! Phased-out product !!!  
 Successor is SIRIUS 3RU2 Preferred successor type is >>3RU2116-  
 1DB1<<



Figure similar

<b>Product brand name</b>	SIRIUS
<b>Product designation</b>	thermal overload relay
<b>General technical data</b>	
<b>Size of overload relay</b>	S00
<b>Size of contactor can be combined company-specific</b>	S00
<b>Power loss [W] total typical</b>	6.6 W
Insulation voltage with degree of pollution 3 rated value	690 V
<b>Surge voltage resistance rated value</b>	6 kV
<b>Protection class IP</b>	
• on the front	IP20
<b>Shock resistance</b>	8g / 10 ms
<b>Type of protection</b>	DMT 98 ATEX G 001
<b>Protection against electrical shock</b>	finger-safe
<b>Reference code acc. to DIN EN 81346-2</b>	F
<b>Ambient conditions</b>	
<b>Installation altitude at height above sea level</b>	

<ul style="list-style-type: none"> <li>• maximum</li> </ul>	2 000 m
Relative humidity during operation	100 %
<b>Main circuit</b>	
Number of poles for main current circuit	3
Adjustable pick-up value current of the current-dependent overload release	2.2 ... 3.2 A
Operating voltage	
<ul style="list-style-type: none"> <li>• at AC-3 rated value maximum</li> </ul>	690 V
<b>Auxiliary circuit</b>	
Number of NC contacts for auxiliary contacts	1
Number of NO contacts for auxiliary contacts	1
Number of CO contacts	
<ul style="list-style-type: none"> <li>• for auxiliary contacts</li> </ul>	0
Operating current of auxiliary contacts at AC-15	
<ul style="list-style-type: none"> <li>• at 24 V</li> <li>• at 110 V</li> <li>• at 120 V</li> <li>• at 125 V</li> <li>• at 230 V</li> <li>• at 400 V</li> </ul>	3 A 3 A 3 A 3 A 2 A 1 A
Operating current of auxiliary contacts at DC-13	
<ul style="list-style-type: none"> <li>• at 24 V</li> <li>• at 110 V</li> <li>• at 125 V</li> <li>• at 220 V</li> </ul>	1 A 0.22 A 0.22 A 0.11 A
<b>Protective and monitoring functions</b>	
Trip class	CLASS 10
<b>Short-circuit protection</b>	
Design of the fuse link	
<ul style="list-style-type: none"> <li>• for short-circuit protection of the auxiliary switch required</li> </ul>	fuse gL/gG: 6 A, quick: 10 A
<b>Installation/ mounting/ dimensions</b>	
Mounting position	with vertical mounting surface +/-135° rotatable, with vertical mounting surface +/- 45° tiltable to the front and back
Mounting type	stand-alone installation
Height	87 mm
Width	45 mm
Depth	78 mm
Required spacing	
<ul style="list-style-type: none"> <li>• with side-by-side mounting</li> <li>— forwards</li> </ul>	0 mm

— Backwards	0 mm
— upwards	0 mm
— downwards	0 mm
— at the side	0 mm
• for grounded parts	
— forwards	0 mm
— Backwards	0 mm
— upwards	0 mm
— at the side	6 mm
— downwards	0 mm
• for live parts	
— forwards	0 mm
— Backwards	0 mm
— upwards	0 mm
— downwards	0 mm
— at the side	6 mm

## Connections/Terminals

<b>Product function</b>	
• removable terminal for auxiliary and control circuit	No
<b>Type of electrical connection</b>	
• for main current circuit	screw-type terminals
• for auxiliary and control current circuit	screw-type terminals
<b>Type of connectable conductor cross-sections</b>	
• for main contacts	
— solid	1x (0.5 ... 1.5 mm <sup>2</sup> ), 1x (0.75 ... 2.5 mm <sup>2</sup> ), 1x 4 mm <sup>2</sup> max.
— finely stranded with core end processing	1x (0.5 ... 1.5 mm <sup>2</sup> ), 1x (0.75 ... 2.5 mm <sup>2</sup> )
• at AWG conductors for main contacts	1x (20 ... 16), 1x (18 ... 14), 1x 12
<b>Type of connectable conductor cross-sections</b>	
• for auxiliary contacts	
— solid	2x (0.5 ... 1.5 mm <sup>2</sup> ), 2x (0.75 ... 2.5 mm <sup>2</sup> )
— finely stranded with core end processing	2x (0.5 ... 1.5 mm <sup>2</sup> ), 2x (0.75 ... 2.5 mm <sup>2</sup> )
• at AWG conductors for auxiliary contacts	2x (20 ... 16), 2x (18 ... 14)

## Certificates/approvals

General Product Approval	For use in hazardous locations
--------------------------	--------------------------------



CCC



CSA



UL



ATEX



IECEX

Declaration of Conformity	Test Certificates	Marine / Shipping
---------------------------	-------------------	-------------------



EG-Konf.

[Miscellaneous](#)

[Type Test Certificates/Test Report](#)

[Special Test Certificate](#)



ABS



BUREAU VERITAS

Marine / Shipping	other
-------------------	-------



LRS



PRS



RINA



RMRS



DNVGL.COM/AF

[Miscellaneous](#)

other
-------

[Confirmation](#)

Further information
---------------------

**Information- and Downloadcenter (Catalogs, Brochures,...)**

<http://www.siemens.com/industrial-controls/catalogs>

**Industry Mall (Online ordering system)**

<https://mall.industry.siemens.com/mall/en/en/Catalog/product?mlfb=3RU1116-1DB1>

**Cax online generator**

<http://support.automation.siemens.com/WW/CAXorder/default.aspx?lang=en&mlfb=3RU1116-1DB1>

**Service&Support (Manuals, Certificates, Characteristics, FAQs,...)**

<https://support.industry.siemens.com/cs/ww/en/ps/3RU1116-1DB1>

**Image database (product images, 2D dimension drawings, 3D models, device circuit diagrams, EPLAN macros, ...)**

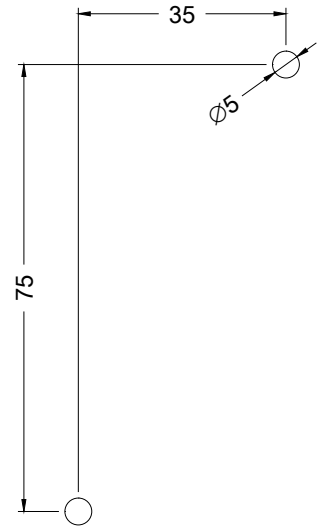
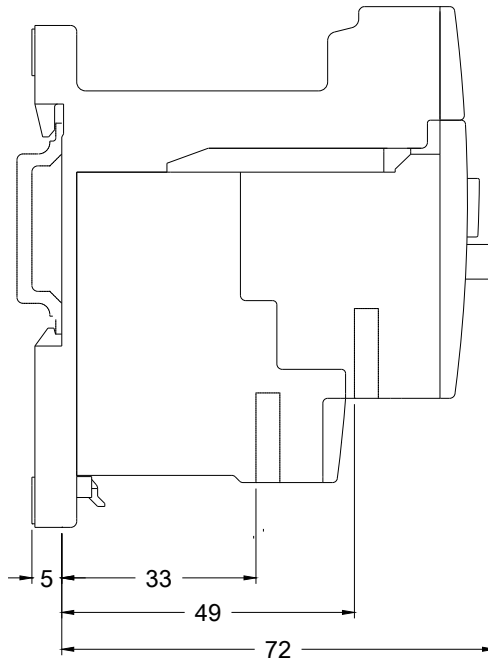
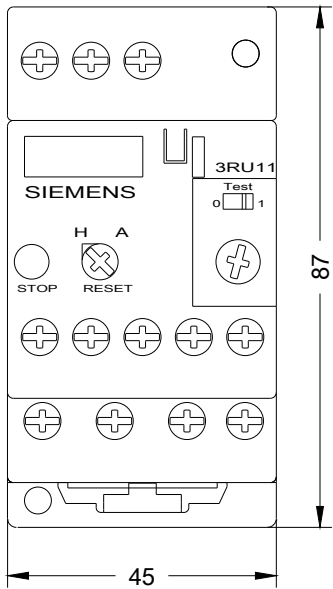
[http://www.automation.siemens.com/bilddb/cax\\_de.aspx?mlfb=3RU1116-1DB1&lang=en](http://www.automation.siemens.com/bilddb/cax_de.aspx?mlfb=3RU1116-1DB1&lang=en)

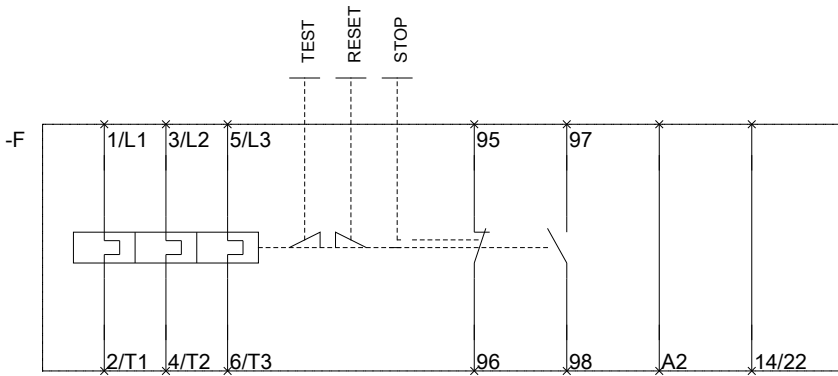
**Characteristic: Tripping characteristics, I<sup>t</sup>, Let-through current**

<https://support.industry.siemens.com/cs/ww/en/ps/3RU1116-1DB1/char>

**Further characteristics (e.g. electrical endurance, switching frequency)**

<http://www.automation.siemens.com/bilddb/index.aspx?view=Search&mlfb=3RU1116-1DB1&objecttype=14&gridview=view1>





last modified:

05/09/2019