

Hydraulic cylinder mill type

CDL2 type



- ▶ Series L2
- ▶ Component series 2X
- ▶ 2 pressure ranges:
 - Nominal pressure 160 bar
 - Nominal pressure 250 bar

Features

- ▶ 4 types of mounting
- ▶ Piston \varnothing (\varnothing AL): 25 ... 200 mm
- ▶ Piston rod \varnothing (\varnothing MM): 14 ... 125 mm
- ▶ Stroke length up to 3000 mm
- ▶ Short length of assembly

Contents

Features	1
Ordering codes	2 ... 4
Technical data	5 ... 7
Overview of types of mounting	8
Dimensions	9 ... 15
Clevis bracket	16 ... 19
Trunnion mounting bearing block	20, 21
Swivel head	22 ... 24
Buckling	25 ... 28
Selection criteria for seals	29
Components	30, 31
Seal kits	32
Priming / painting	33
Corrosivity categories	33
Project planning / maintenance instructions	34
Project planning software ICS	35



Project planning software
Interactive Catalog System
www.boschrexroth.com/mill-type-cylinder

Technical data

(For applications outside these values, please consult us!)

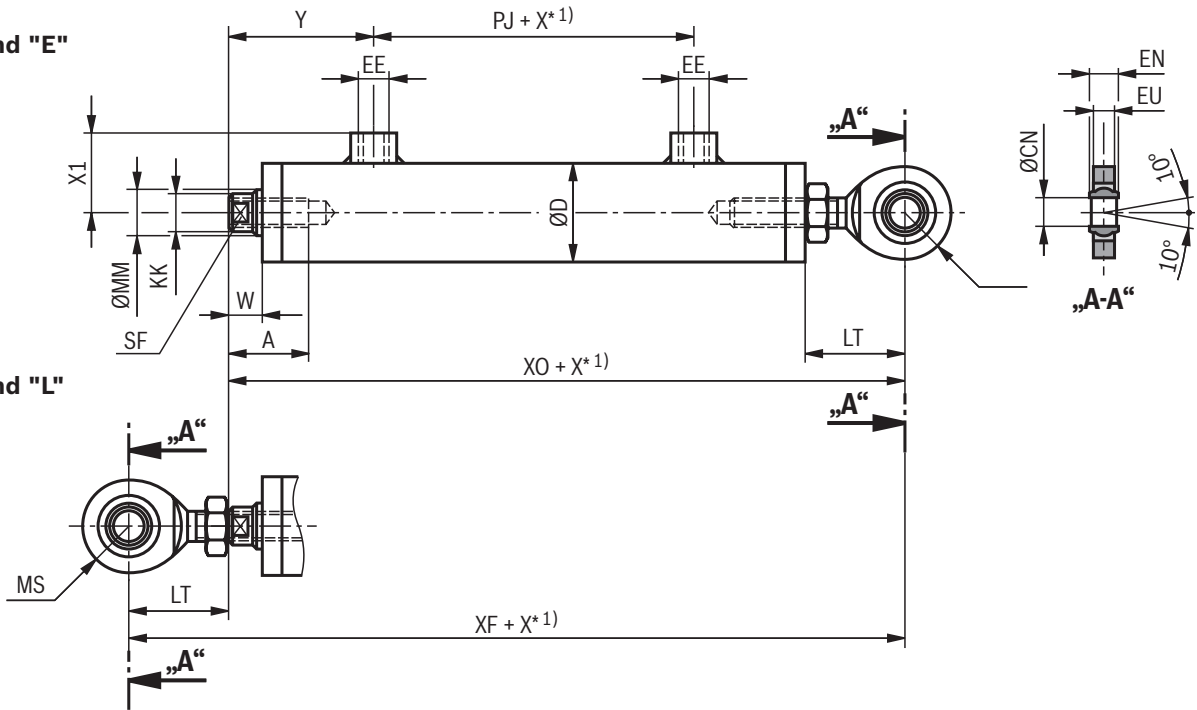
Weight for cylinder (in kg)

Piston ØAL in mm	Piston rod ØMM in mm	at 1 mm stroke length				per 100 mm stroke length in kg
		"M00" in kg	"MP5" in kg	"MF3" in kg	"MT4" in kg	
25	14	1	1	1	1	0.4
32	18	2	2	2	2	0.6
40	22	–	2	3	3	0.9
	25	–	2	4	4	1.1
50	28	–	3	4	5	1.2
	32	–	4	5	7	1.5
63	36	–	5	7	9	1.8
	40	–	6	9	12	2.3
80	45	–	9	13	15	2.9
	50	–	11	15	20	3.8
100	56	–	15	20	26	4.6
	63	–	19	26	36	6
125	70	–	29	35	46	7.2
	80	–	38	43	67	10.1
160	100	–	67	–	–	15.1
200	125	–	110	–	–	22

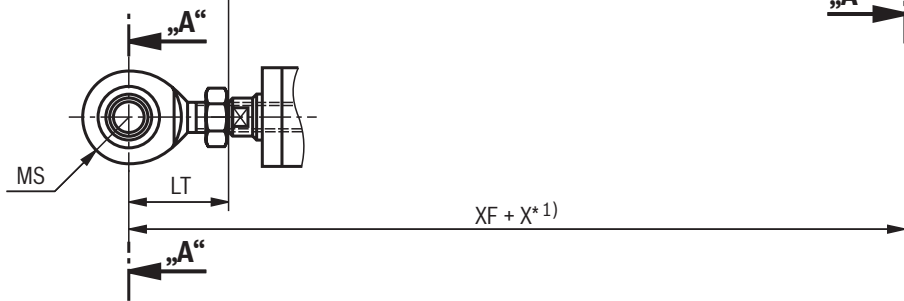
Dimensions: "MP5"
(dimensions in mm)

ØAL 25 ... 32 mm

Piston rod end "E"

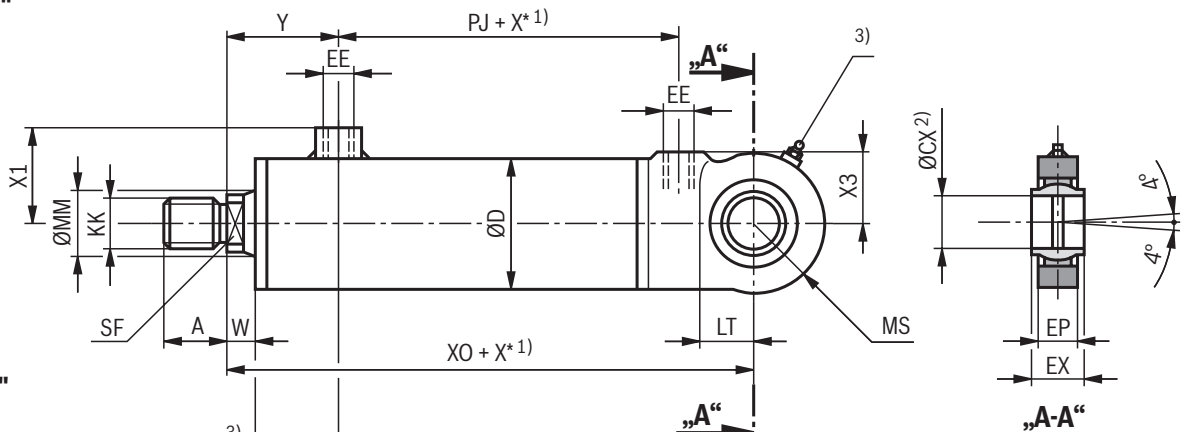


Piston rod end "L"

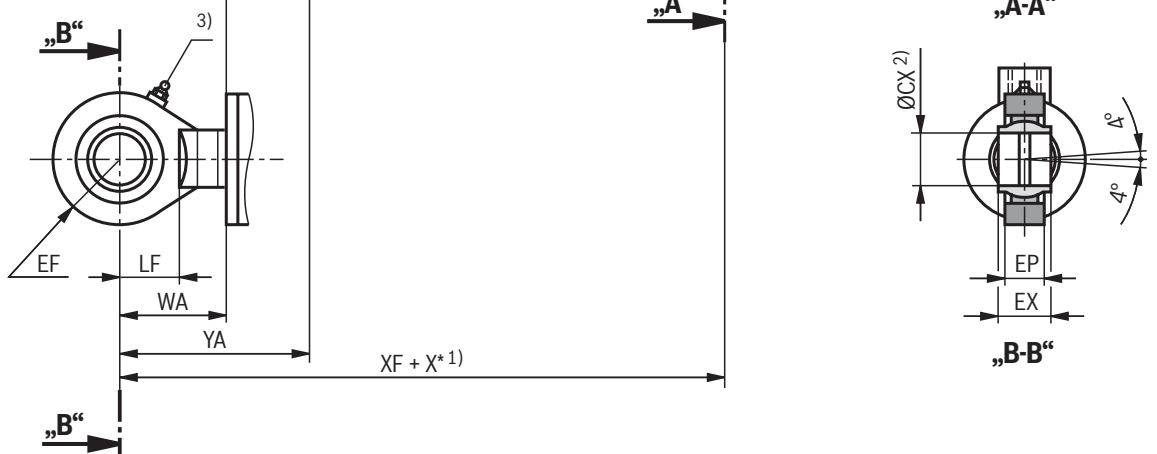


ØAL 40 ... 200 mm

Piston rod end "H"



Piston rod end "F"



Dimensions: "MP5"
(dimensions in mm)

ØAL	ØMM at a nominal pressure of		KK	A	SF	W	WA	ØD	Y	YA	PJ	XO	XF
	160 bar	250 bar											
25	14	-	M10	26	12	10	-	31	44	-	27	132	158
32	18	-	M12	28	15	11	-	40	48	-	32	149	180
40	22	-	M16x1.5	22	17	13	43	50	60	90	51	141	170
	-	25	M20x1.5	28	19	15	41	52	62	88	54	147	173
50	28	-	M20x1.5	28	22	13	50	60	62	99	58	158	195
	-	32	M27x2	36	27	15	52	62	64	101	65	167	204
63	36	-	M27x2	36	28	14	62	75	68	116	70	183	230
	-	40	M33x2	45	32	17	64	78	71	118	72	192	239
80	45	-	M33x2	45	36	16	76	95	84	144	77	209	269
	-	50	M42x2	56	41	19	74	100	84	139	81	222	277
100	56	-	M42x2	56	46	18	88	120	90	160	85	228	298
	-	63	M48x2	63	50	19	90	125	91	162	93	256	327
125	70	-	M48x2	63	60	20	106	150	99	185	94	260	346
	-	80	M64x3	85	65	22	112	160	105	195	113	307	397
160	-	100	M80x3	95	85	30	118	200	124	212	120	390	478
200	-	125	M100x3	112	110	35	143	245	139	247	124	434	542

ØAL	ØMM at a nominal pressure of		EE	X1 ±1	X3 ±1	LT	LF	MS ±2	ØCX H7	EX h12	EP max.	EF ±2	ØCN -0.008	EN h12	EU max.
	160 bar	250 bar													
25	14	-	G1/8	24.5	-	27 ⁴⁾	-	14.5	-	-	-	-	10	9	7.5
32	18	-	G1/4	34	-	32 ⁴⁾	-	17	-	-	-	-	12	10	8.5
40	22	-	G1/4	39	29	25	24	28	20	20	16	28	-	-	-
	-	25	G1/4	46	30	29	30	31	25	25	20	33	-	-	-
50	28	-	G3/8	45	33	34	30	33	25	25	20	33	-	-	-
	-	32	G3/8	52	37	37	35	39	32	32	22	42	-	-	-
63	36	-	G1/2	55	40	46	35	42	32	32	22	42	-	-	-
	-	40	G1/2	65	44	48	45	48	40	40	26	51	-	-	-
80	45	-	G1/2	65	53	49	45	51	40	40	26	51	-	-	-
	-	50	G1/2	76	57	58	52	60	50	50	34	61	-	-	-
100	56	-	G3/4	80	63	59	52	61	50	50	34	61	-	-	-
	-	63	G3/4	91	70	73	65	73	63	63	42	76	-	-	-
125	70	-	G3/4	95	78	69	65	76	63	63	42	76	-	-	-
	-	80	G3/4	109	88	91	80	92	80	80	52	92	-	-	-
160	-	100	G1	136	97	120	-	110	100	100	72	110	-	-	-
200	-	125	G1	158	120	145	-	130	125	125	92	130	-	-	-

1) X* = stroke length

2) Related bolt Ø j6

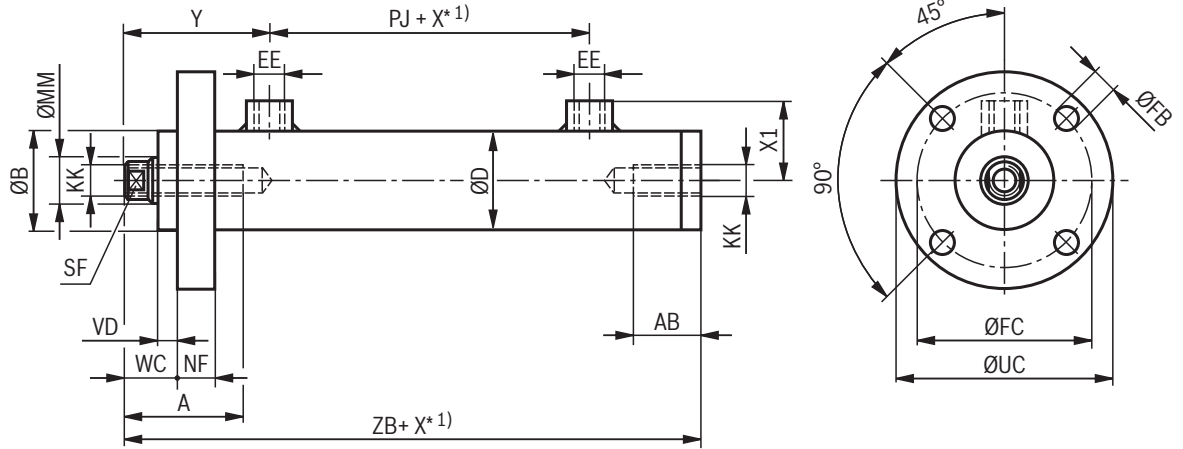
3) Grease nipple, cone head form A according to DIN 71412

4) min.

Dimensions: "MF3"
(dimensions in mm)

ØAL 25 ... 32 mm

Piston rod end "E"



ØAL 40 ... 125 mm

Piston rod end "H"

