

Helical-bevel gearbox | G-motion atex

Technical data

Permissible radial and axial forces	
Output _____	6-2
Output backlash _____	6-4
Position of ventilation, sealing elements and oil control _____	6-5
Compensation reservoir for mounting position C _____	6-7
Weights _____	6-8
Geared motors _____	6-8
Gearboxes with mounting flange _____	6-9
Additional weights _____	6-10

Selection tables

Geared motors for Atex category 2G, 2D, 3G (zone 1, 21, 2) _____	6-12
Geared motors for Atex category 3D (zone 22) _____	6-21
Gearboxes with mounting flange for Atex category 2GD, 3GD (zone 1, 21, 2, 22) _____	6-42

Dimensions

Geared motors for Atex category 2G, 2D, 3G (zone 1, 21, 2) _____	6-90
Geared motors for Atex category 3D (zone 22) _____	6-106
Gearboxes with mounting flange for Atex category 2GD, 3GD (zone 1, 21, 2, 22) _____	6-122
Other dimensions _____	6-138
Hollow shaft with shrink disc _____	6-138
With second output shaft end _____	6-139
Hoseproof hollow shaft cover _____	6-140
Torque plate at threaded pitch circle _____	6-141
Torque plate at housing foot _____	6-142
Mounting set for hollow shaft circlip _____	6-143
Proposed design for auxiliary tools _____	6-143

Technical data - Helical-bevel gearboxes

Weights - Gearboxes with mounting flange



GKS□□-3N H□R

Gearbox size	Drive size														
	1A	1B 2B	□C	□D	1E 2E 3E	4E	1F 2F	3F	1G 3G	2G	1H	2H	3H	1K	2K
04	15	15	18	21											
05		25	28	31	33	37									
06		39	42	45	48	51	49	53							
07			68	71	73	77	75	79	98	95	106		102		
09				119	122	125	123	126	147	144	155	159	151	175	
11					221	225	222	225	245	242	253	257	249	273	280
14									413	410	421	425	417	440	447

GKS□□-4N H□R

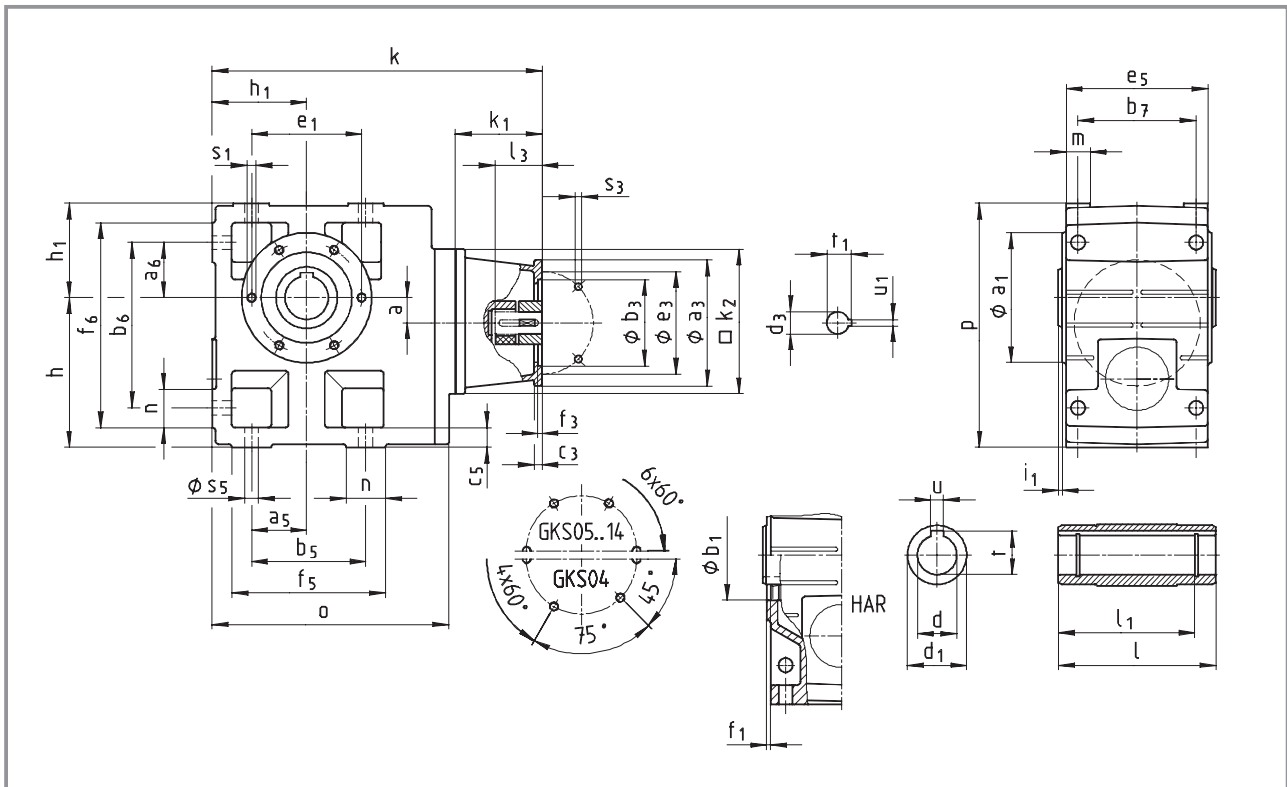
Gearbox size	Drive size													
	1A	1B 2B	□C	□D	1E 2E 3E	4E	1F 2F	3F	1G 3G	2G	1H	2H	3H	
05	25	26	29											
06	42	43	46	49										
07		73	76	79	81	85								
09		126	129	132	135	138	136	140						
11			237	240	242	246	244	248	267	264				
14				425	428	431	429	432	453	450	461	465	457	

Weights in [kg] with oil capacity for mounting position A. All data is approximate.

Note the additional weights on page 6-10.

Helical-bevel gearbox dimensions

Gearboxes with mounting flange for Atex category 2GD, 3GD (zone 1, 21, 2, 22)



Gearbox GKS□□-3N H□R		Drive size											
		1A	1B	2B	1C	2C	3C	4C	6C	7C	1D	2D	
		Corresponds to IEC motor											
		63	71	63	80	71	71	71	63	80	90	80	
Housing	k ₁	75	77	75	91						115		
	k ₂	120	145	120	145						180		
Flange	a ₃	90	105	90	160	160	105	120	160	120	160		
	b ₃ H8	60	70	60	110	110	70	80	110	80	110		
	c ₃	7	8	7	10	10	8	8	10	8	10		
	e ₃	75	85	75	130	130	85	100	130	100	130		
	f ₃	3	3	4	4	3	3.5	4	3.5	4			
	s ₃ 4 x	5.5	6.6	5.5	9	9	6.6	6.6	9	6.6	9		
Required motor shafts	d ₃	11	14	11	19	14	14	14	11	19	24	19	
	l ₃	min	23	30	23	25				23	25	50	40
		max.	23	30	23	40				40	40	50	50
	U ₁	4	5	4	6	5	5	5	4	6	8	6	
	t ₁	12.5	16	12.5	21.5	16	16	16	12.5	21.5	27	21.5	
Gearbox size	Overall length k												
	04	287	294	287	308						342		
	05		314		328						362		
	06		370		384						418		
	07				440						474		
	09										545		

Helical-bevel gearbox dimensions

Gearboxes with mounting flange for Atex category 2GD, 3GD (zone 1, 21, 2, 22)

Gearbox GKS□□-3N H□R		Drive size														
		1E	2E	3E	4E	1F	2F	3F	1G	2G	3G	1H	2H	3H	1K	2K
		Corresponds to IEC motor														
		100 112	90	80	90	100 112	90	90	132	100 112	132	160	180	132	200	225
Housing	k_1	110			130	139		159	180	160	180	214	214	184	244	274
	k_2	180			180	180		180	265			300			300	
Flange	a_3	160			188	160		188	300	250	250	350	350	300	400	450
	b_3 H8	110			130	110		130	230	180	180	250	250	230	300	350
	c_3	10			20	10		20	18	18	35	20	20	18	20	
	e_3	130			165	130		165	265	215	215	300	300	265	350	400
	f_3	4			4	4		4	4.5			6	6	4.5	6	
	s_3 4 x 8 x	9			M10	9		M10	13.5			17.5	17.5	13.5	17.5	17.5
Required motor shafts	d_3	28	24	19	24	28	24	24	38	28	38	42	48	38	55	60
	l_3 min max.	30			50	30		50	80	60	80	110	110	80	110	140
		60			50	60		50	80	60	80	110	110	80	110	140
	U_1	8	8	6	8	8	8	8	10	8	10	12	14	10	16	18
t_1	31	27	21.5	27	31	27	27	41	31	41	45	51.5	41	59	64	
Gearbox size	Overall length k															
	05	357			377											
	06	413			433	442		462								
	07	469			489	498		518	553	533	553	591		561		
	09	540			560	569		589	624	604	624	662	662	632	692	
	11	631			651	660		680	715	695	715	753	753	723	783	813
	14								814	794	814	852	852	822	882	912

Gearbox size	Gearbox					
	o	l^*	p^*	h^*	h_1	a
04	203	115	171	100	71	20
05	232	140	205	125	80	23
06	291	160	250	150	100	28
07	354	200	310	190	120	34
09	429	240	386	236	150	41
11	527	290	485	300	185	54
14	636	350	605	375	230	67

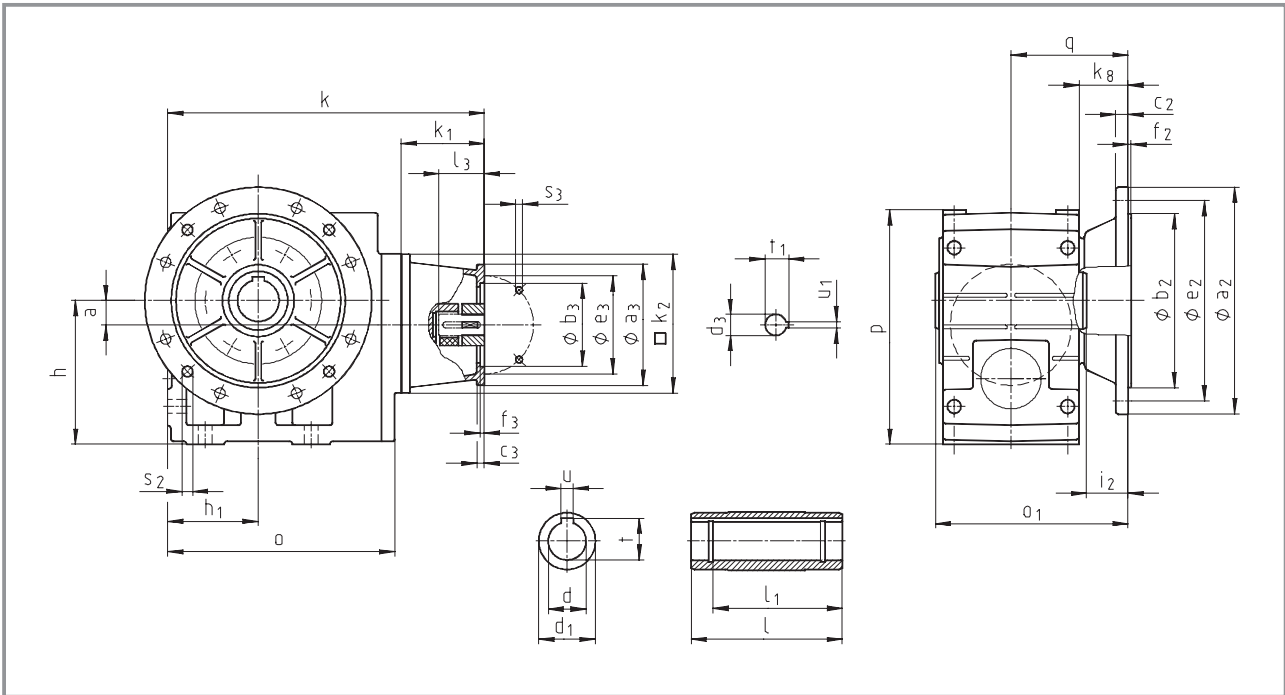
Gearbox size	Foot											
	a_5	a_6	b_5	b_6	b_7	c_5	e_5	f_5	f_6	n	m	s_5
04	45	45	110	119	85	14	105	132	141	22	21	9
05	47.5	47.5	115	140	105	17	127	144	169	29	21	11
06	60	60	155	170	120	20	145	191	206	36	23	14
07	70	70	190	210	150	25	180	235	255	45	28	18
09	90	90	240	266	185	30	222	300	326	60	37	22
11	105	105	290	325	225	40	270	363	398	73	43	26
14	135	135	360	415	275	50	328	442	497	82	52	33

Gearbox size	Hollow shaft						Threaded pitch circle					
	d H7	l	d_1	l_1	u JS9	t +0.2	a_1	b_1 H7	e_1	f_1	i_1	s_1
04	25 30	115	45	100	8 8	28.3 33.3	105	75	90	3	2.5	M6x12
05	30 35	140	50	124	8 10	33.3 38.3	118	80	100	4	4	M8x15
06	40 45	160	65	140	12 14	43.3 48.8	140	100	120	4	5	M10x16
07	50 55	200	75	175	14 16	53.8 59.3	165	115	140	5	5	M12x18
09	60 70	240	95	210	18 20	64.4 74.9	205	145	175	6	5	M16x24
11	70 80	290	105	250	20 22	74.9 85.4	240	140	205	6	6	M20x32
14	100	350	135	305	28	106.4	290	170	250	6	7	M24x35

Dimensions in [mm]* Observe dimension k_2 ; with gearbox size 04 and drive size 1D/2D, dimension $k_2/2 > h-a$.

Helical-bevel gearbox dimensions

Gearboxes with mounting flange for Atex category 2GD, 3GD (zone 1, 21, 2, 22)



Gearbox GKS□□-3N HAK		Drive size											
		1A	1B	2B	1C	2C	3C	4C	6C	7C	1D	2D	
		Corresponds to IEC motor											
		63	71	63	80	71	71	71	63	80	90	80	
Housing	k ₁	75	77	75	91							115	
	k ₂	120	145	120	145							180	
Flange	a ₃	90	105	90	160	160	105	120	160	120	160		
	b ₃ H8	60	70	60	110	110	70	80	110	80	110		
	c ₃	7	8	7	10	10	8	8	10	8	10		
	e ₃	75	85	75	130	130	85	100	130	100	130		
	f ₃	3	3	4	4	3	3.5	4	3.5	4			
	s ₃ 4 x	5.5	6.6	5.5	9	9	6.6	6.6	9	6.6	9		
Required motor shafts	d ₃	11	14	11	19	14	14	14	11	19	24	19	
	l ₃	min	23	30	23	25				23	25	50	40
		max.	23	30	23	40				40	40	50	50
	U ₁	4	5	4	6	5	5	5	4	6	8	6	
t ₁	12.5	16	12.5	21.5	16	16	16	12.5	21.5	27	21.5		
Gearbox size	Overall length k												
	04	287	294	287	308							342	
05		314		328							362		
06		370		384							418		
07				440							474		
09											545		